

Chapter Review

Plant Processes

Chapter

11

Part A. Vocabulary Review

Directions: Match the description in the first column with the item in the second column by writing the correct letter in the space provided.

- | | |
|---|-------------------|
| _____ 1. plants requiring short nights to flower | a. auxin |
| _____ 2. plants requiring long nights to flower | b. day-neutral |
| _____ 3. using light energy to make food | c. long-day |
| _____ 4. hormone that causes phototropism | d. photoperiodism |
| _____ 5. flowering response of a plant to length of light and dark | e. photosynthesis |
| _____ 6. releasing energy from food | f. respiration |
| _____ 7. plants that flower over a wide range of dark periods | g. short-day |
| _____ 8. response of a plant to a stimulus | h. stomata |
| _____ 9. openings on a leaf that let in carbon dioxide and let out oxygen | i. tropism |

Directions: Study the meanings of the word parts listed below. In the space provided write the correct term that combines two of the word parts.

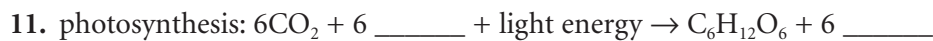
bio—life

photo—light

tropo—turning

10. _____ growth response of a plant to light

Directions: Complete the following equations.



13. Describe the difference between the two equations.

Chapter Review (continued)

Part B. Concept Review

1. Give two reasons photosynthesis is important and, in words, write its equation.

a. _____

b. _____

Equation: _____

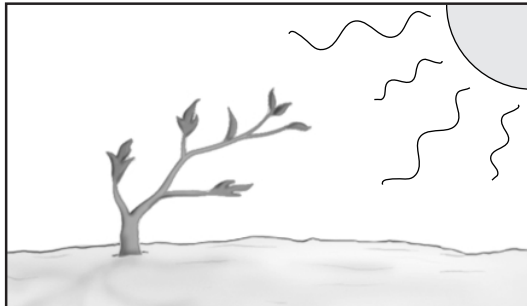
2. Give two reasons respiration is important and, in words, write its equation.

a. _____

b. _____

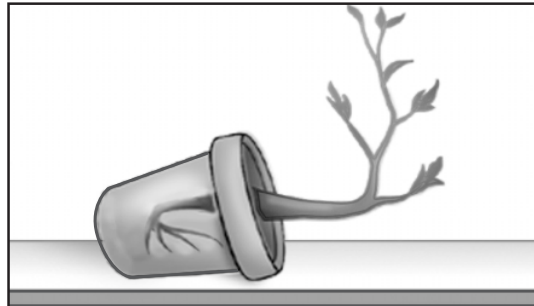
Equation: _____

Directions: Identify the following tropisms and name the stimuli.



3. Tropism: _____

4. Stimulus: _____



5. Tropism: _____

6. Stimulus: _____

Directions: Answer the following question on the lines provided.

7. Describe the process of gas exchange in plants.
